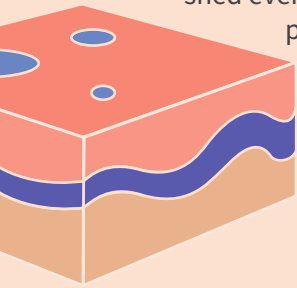


# Impact of COVID-19 on the Psoriasis and Psoriatic Arthritis Community in Canada—Highlights from a National Survey



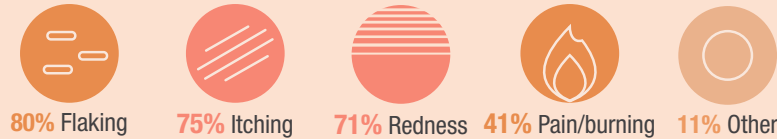
## Snapshot of Psoriasis

Psoriasis (PsO) is a chronic inflammatory condition that affects 1-3% of Canadians. Typically, skin cells grow, mature and are shed every 28-30 days but this happens 10 times faster for people with psoriasis. Psoriasis is not contagious.



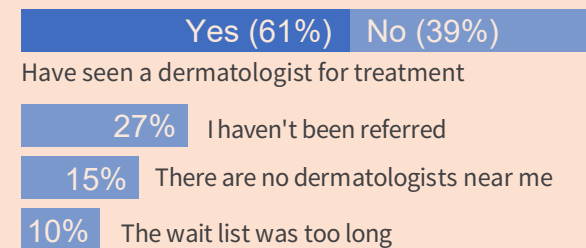
### Pre-COVID-19 PsO Symptoms

Psoriasis symptoms can go through cycles of flaring (worsening of symptoms) for periods of time, then subsiding.

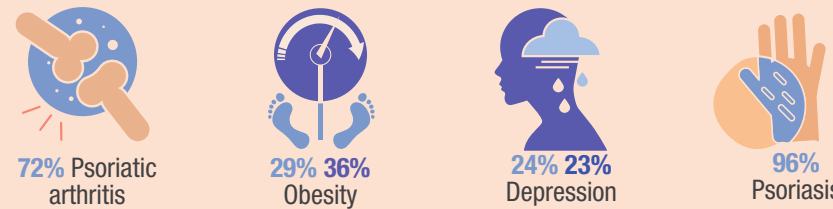


### Psoriasis Care

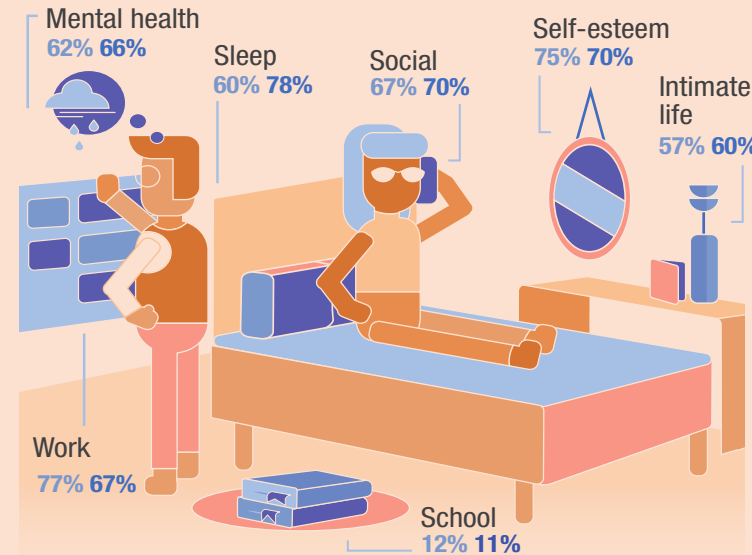
Of respondents who do not see a dermatologist, the majority indicate that their family doctor hasn't referred them.



### Psoriasis & PsA Most Common Comorbidities



## PsO & PsA Impacts Prior to COVID-19

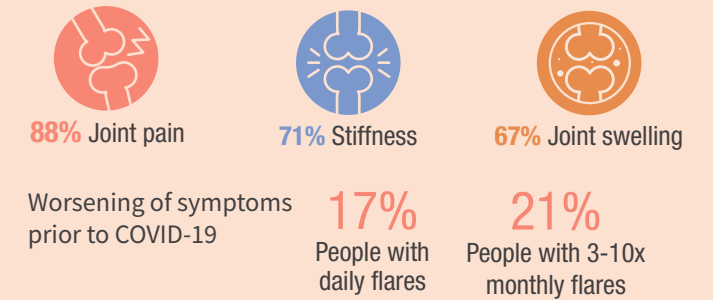


## Snapshot of Psoriatic Arthritis

An estimated 1 in 3 people with psoriasis will develop psoriatic arthritis (PsA), a chronic type of inflammatory arthritis that can be debilitating without appropriate care.

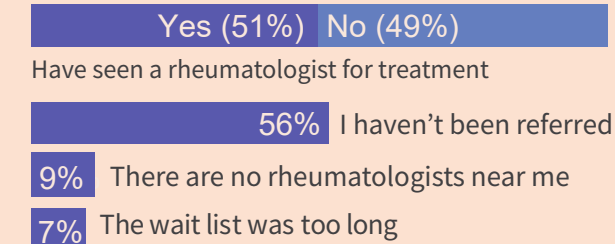
### Pre-COVID-19 PsA Symptoms

PsA can flare up for periods when symptoms are worse than usual.

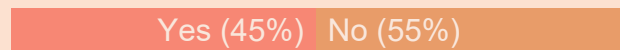


### Psoriatic Arthritis Care

Of respondents who do not see a rheumatologist, the majority indicate that their family doctor hasn't referred them.



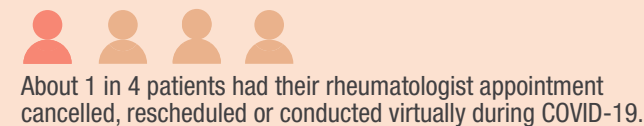
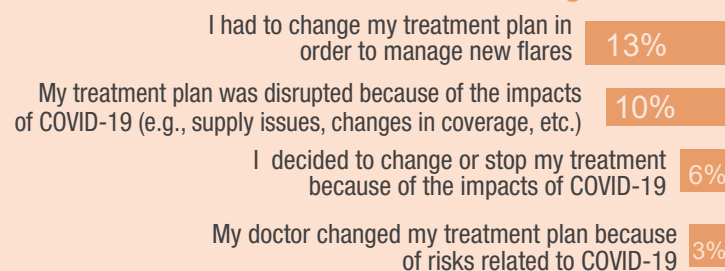
## Access to Care During COVID-19



Almost half of respondents avoided seeking care with doctor or at a hospital

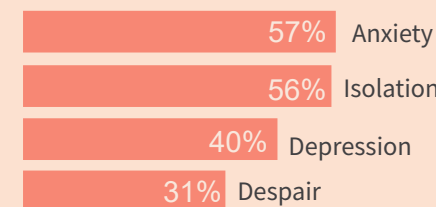


### Changes to Access to Treatments During COVID-19



### COVID-19 Impacts on Mental Health

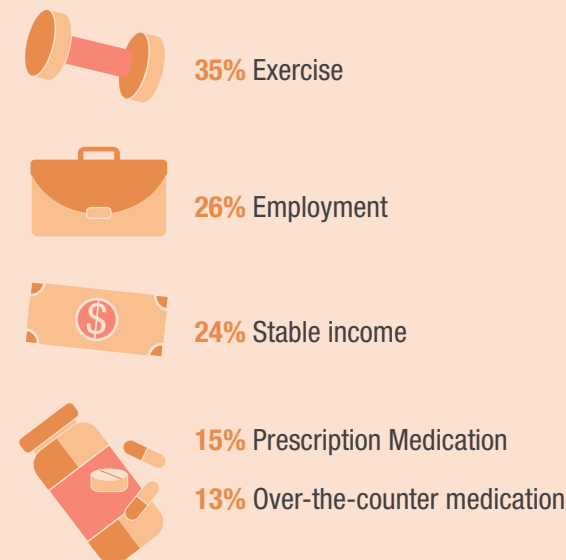
1 in 2 respondents noted that their mental health was "worse" or "much worse" during COVID-19.



29% Percentage of respondents who were able to access mental health supports during the pandemic.

### Impacts on Social Determinants of Health

Patients were impacted by the pandemic, reporting worse or much worse access to:



## Survey Demographics

